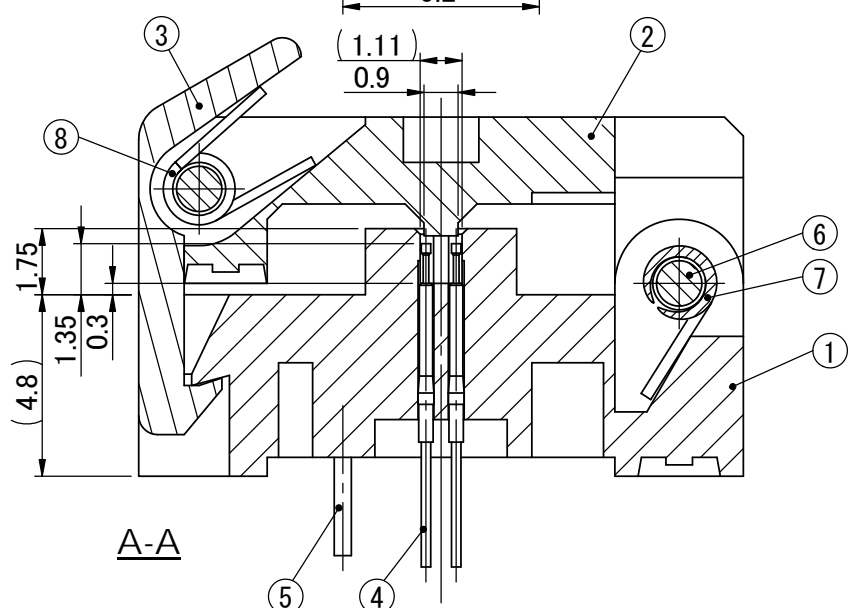
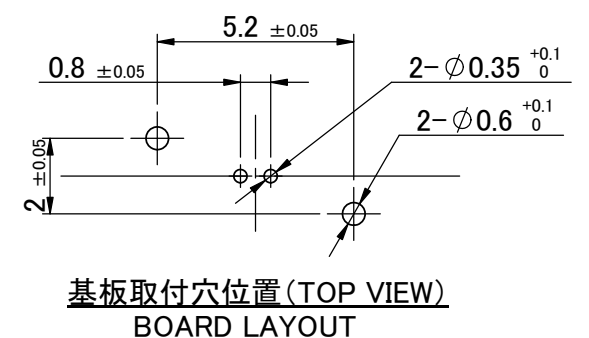
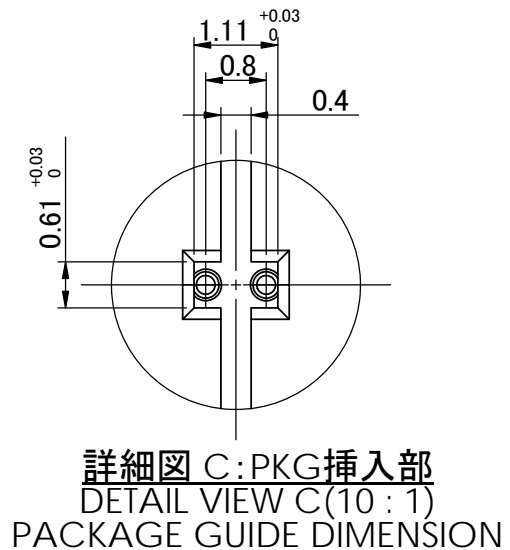
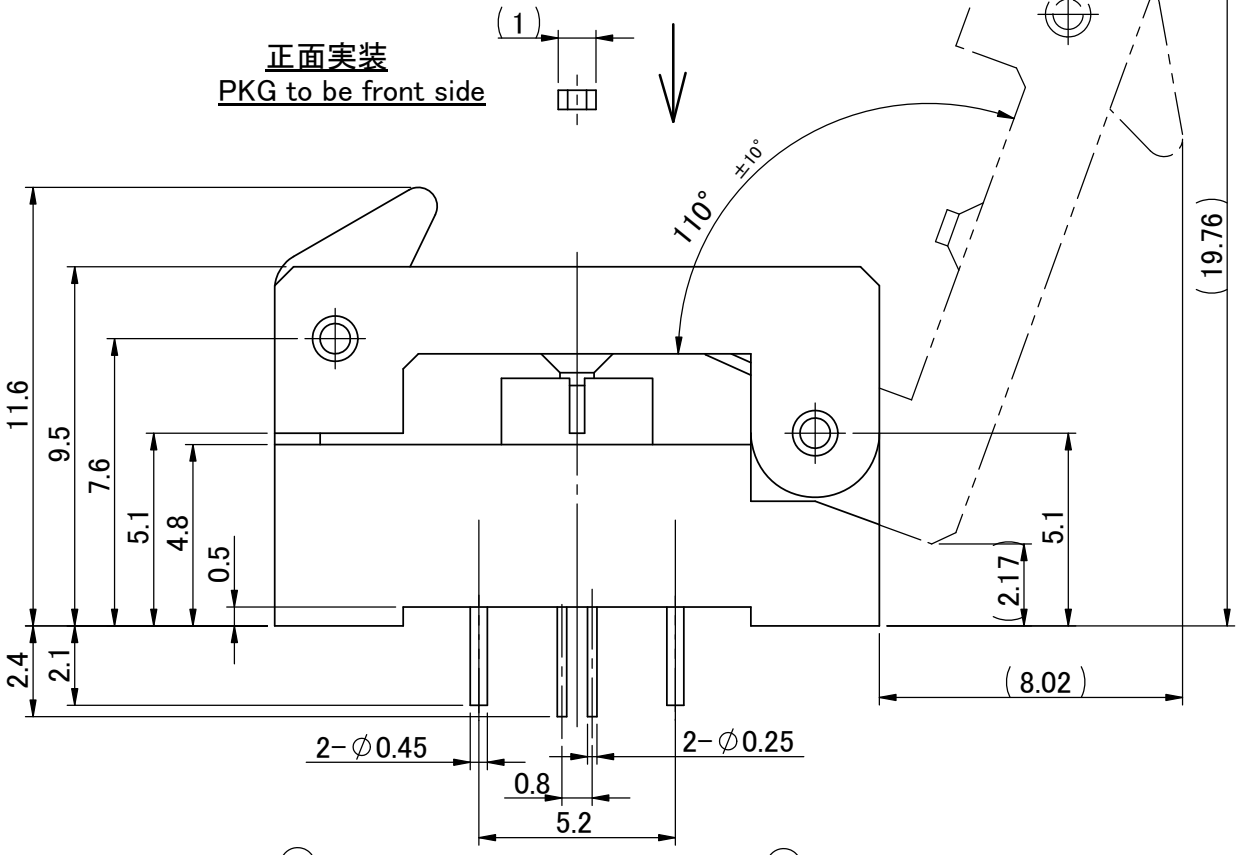
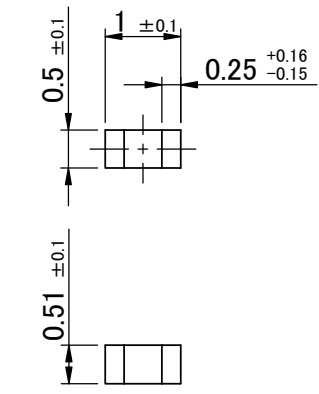
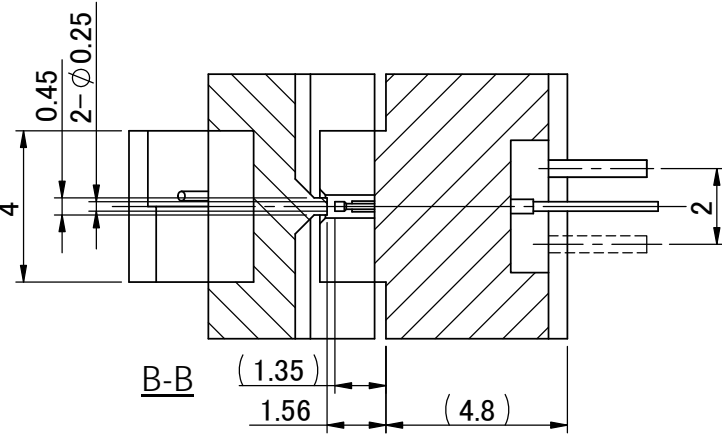
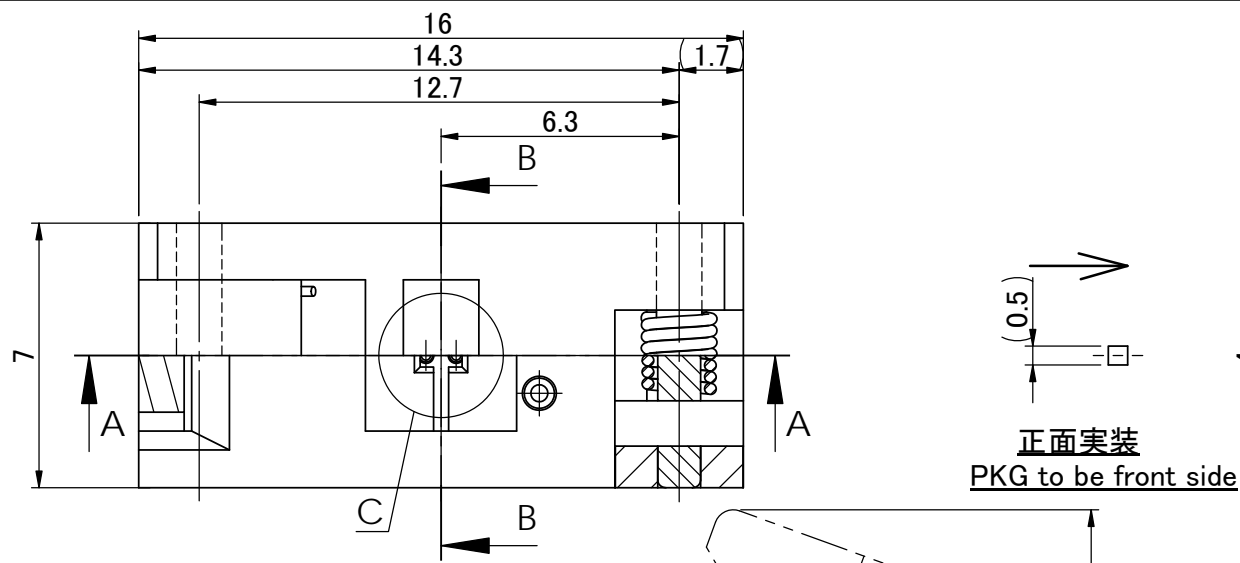


| 記号 | 年-月-日 | 変更理由 | 担当者 | 変更ヶ所 |
|----|-------|------|-----|------|
| 1 | | | | |
| 2 | | | | |
| 3 | | | | |
| 4 | | | | |
| 5 | | | | |



NOTE
 1.コンタクト荷重(CONTACT FORCE)
 変位量0.3mm時、22gf±5gf(STROKE 0.3mm 0.22N±0.05N)

| 8 | SPRING | CXP-E04-01-062 | 1 | CB41100201 | SUS |
|------|---------------------------|----------------|-----|----------------|-----------------|
| 7 | SPRING | CXP-E04-01-061 | 1 | CB41100101 | SUS |
| 6 | SHAFT | CXP-E04-01-051 | 2 | MT31100101 | SUS |
| 5 | SHAFT(Au plating) | CXP-K02-05-051 | 2 | MT31105801 | Phosphor Bronze |
| 4 | SPRING PROBE (Au plating) | PRC-042-04-00S | 2 | CT21203201 | BeCu/BS |
| 3 | LATCH | CXX-K06-01-031 | 1 | ML11116001 | PES |
| 2 | COVER | CAP-002-04-021 | 1 | ML11271901 | PES |
| 1 | BASE | CAP-002-04-011 | 1 | ML11271801 | PES |
| ITEM | PART DESCRIPTION | PART NUMBER | QTY | DRAWING NUMBER | NOTE |

ANGLE

エム・アイ・エス テクノロジー (株)
MiS Technologies

一般公差 (GENERAL TOLERANCES) ±0.5

品名 (TITLE) 1.0 × 0.5 SOCKET (2PIN)

| | | | | |
|--------|--------|---------------------|------|-------|
| 171207 | 171207 | 品番 (PART NUMBER) | REV. | SCALE |
| M.I | M.I | CAP-002-04-00 | a | 5:1 |
| 製図 | 設計 | 図番 (DRAWING NUMBER) | | SHEET |
| | | AY000122601 | | 1 / 1 |

製図 設計 検図 承認