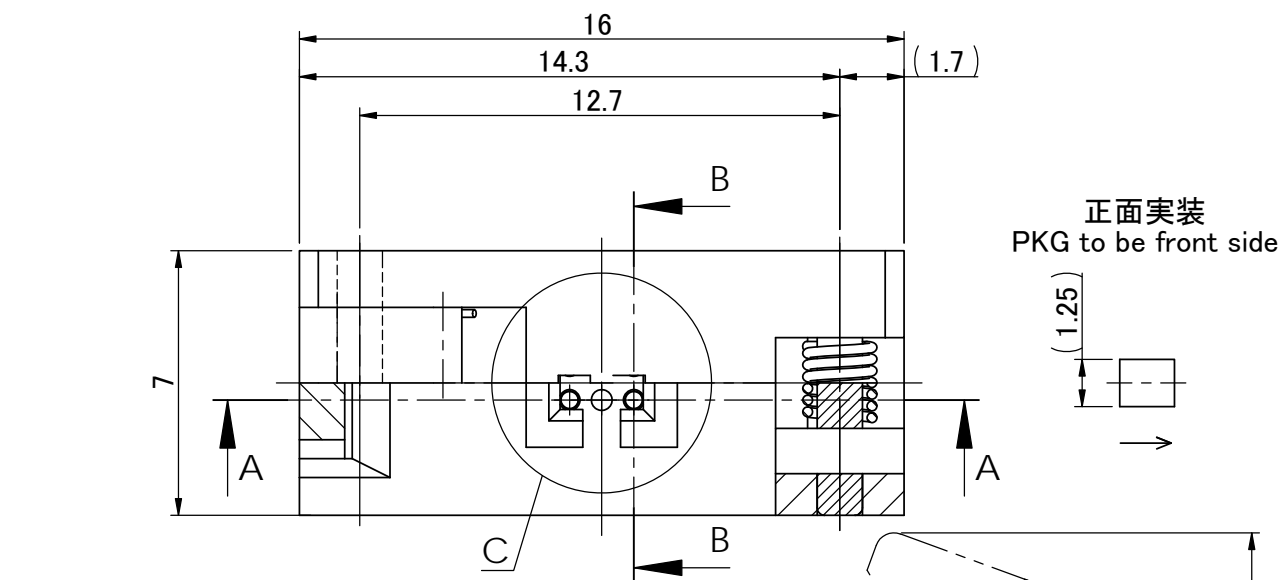
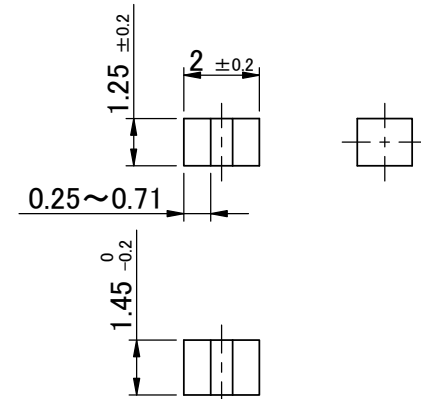
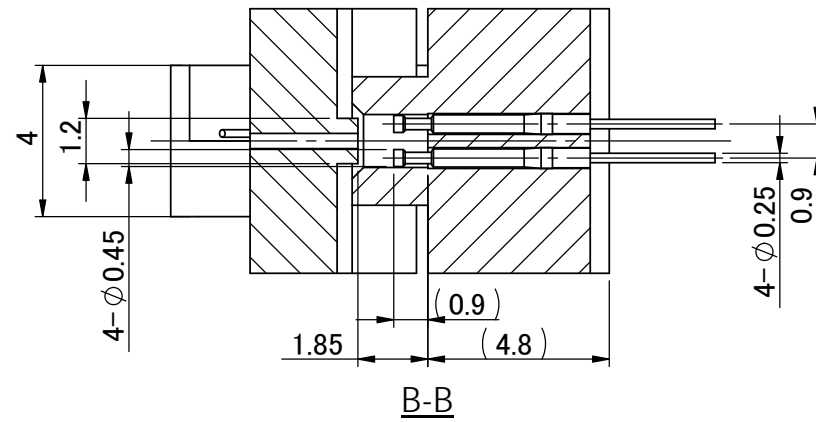
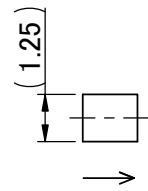


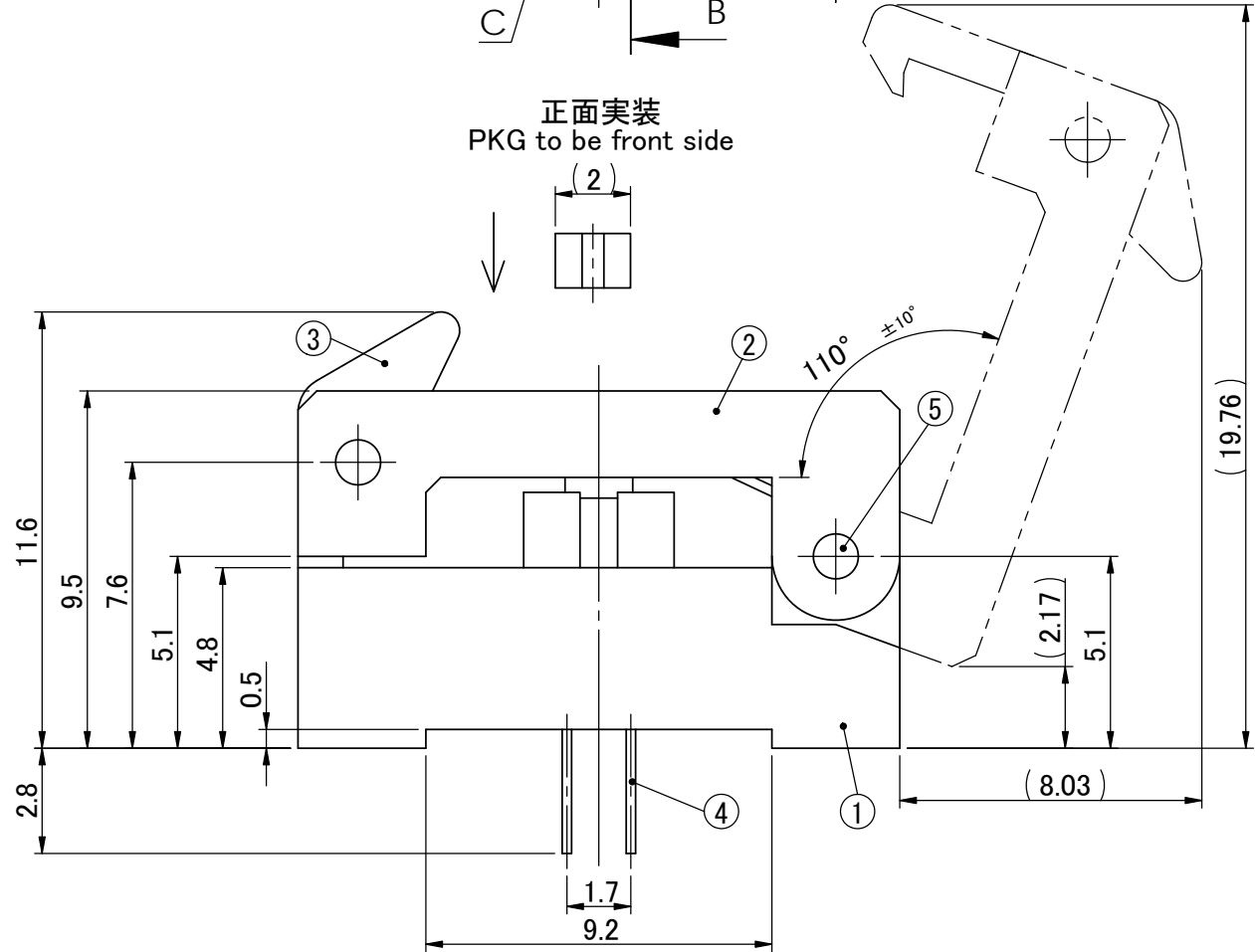
記号	年-月-日	変更理由	担当者	変更ヶ所
1	180117	PART NUMBER CHANGE	M. I	2
2				
3				
4				
5				



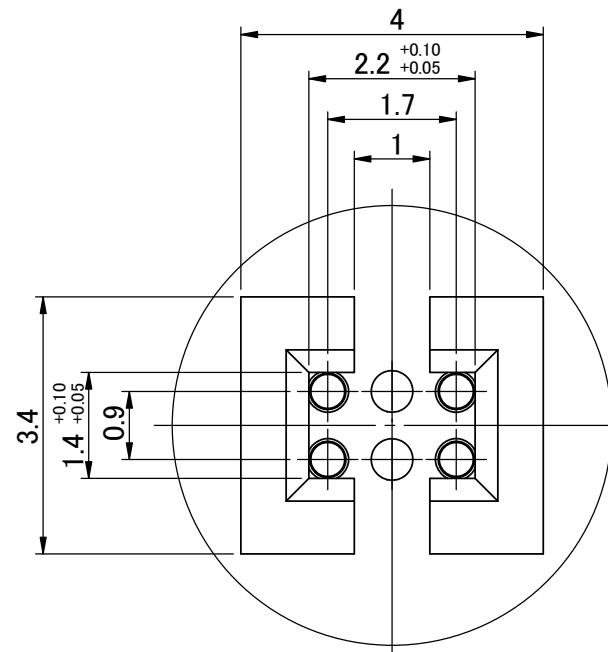
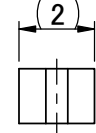
正面実装  
PKG to be front side



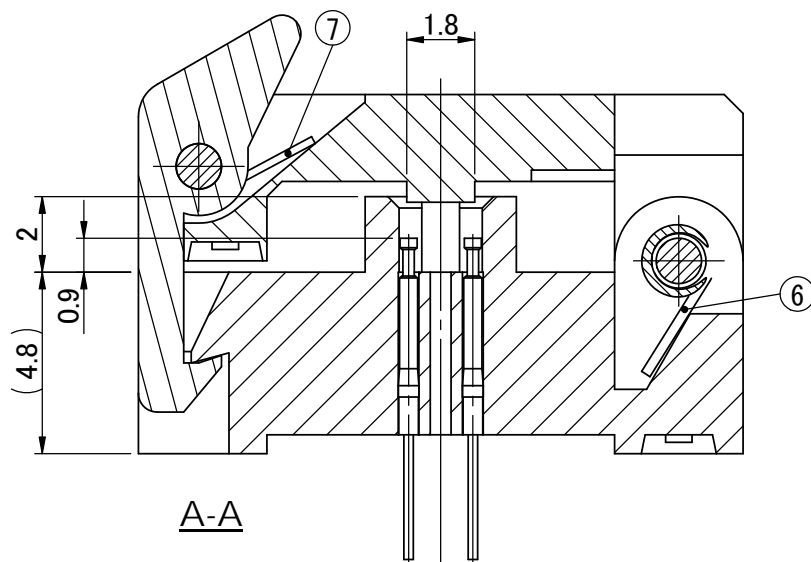
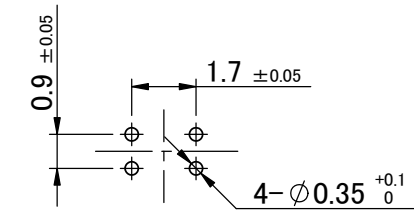
適合デバイス寸法  
PACKAGE SIZE



正面実装  
PKG to be front side



基板取付穴位置 (TOP VIEW)  
BOARD LAYOUT



詳細図 C: PKG挿入部  
DETAIL VIEW C (S=10:1)  
PACKAGE GUIDE DIMENSION

NOTE

1. コンタクト荷重 (CONTACT FORCE)  
変位量0.5mm時、55gf ± 10gf (STROKE 0.5mm 0.54 N ± 0.1N)

7	SPRING	CXP-E04-01-062	1	CB41100201	SUS
6	SPRING	CXP-E04-01-061	1	CB41100101	SUS
5	SHAFT	CXP-E04-01-051	2	MT31100101	SUS
4	SPRING PROBE (Au plating)	PRC-055-02-00S	4	CT21202801	Brass
3	LATCH	CXP-A04-02-031	1	ML11102201	PES
2	COVER	CAP-002-02-021	1	ML11272901	PES
1	BASE	CXP-K06-02-011	1	ML11223601	PES
ITEM	PART DESCRIPTION	PART NUMBER	QTY.	DRAWING NUMBER	NOTE

ANGLE		エム・アイ・エス テクノロジー (株) MiS Technologies			
一般公差 (GENERAL TOLERANCES)		品名 (TITLE) 2.0 × 1.25 SOCKET (2PIN)			
±0.5					
170907	170907	品番 (PART NUMBER)		REV.	SCALE
M.I	M.I	CAP-002-02-00		b	5:1
製図		設計		図番 (DRAWING NUMBER)	
検図		承認		AY000120301	
					SHEET
					1 / 1