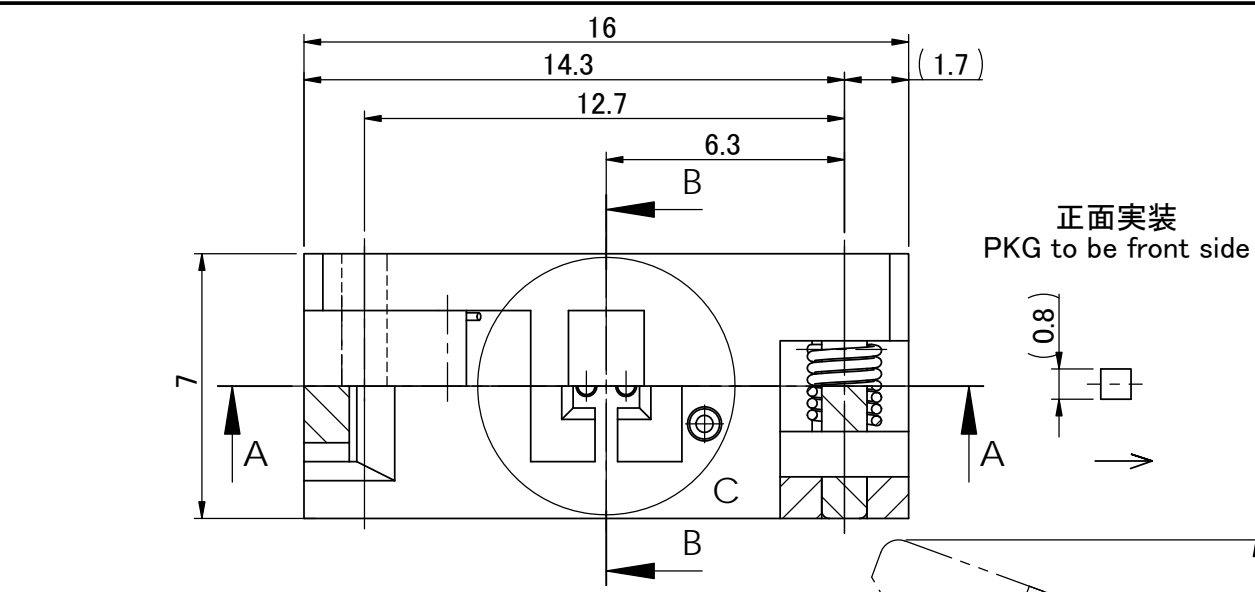
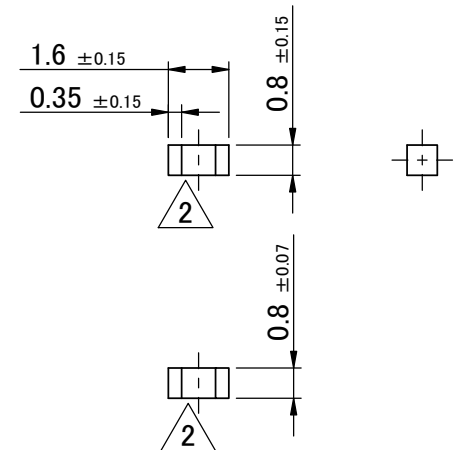
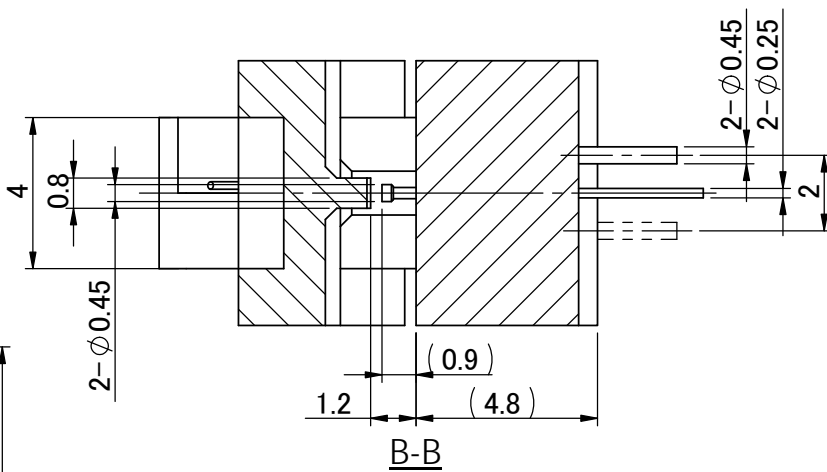


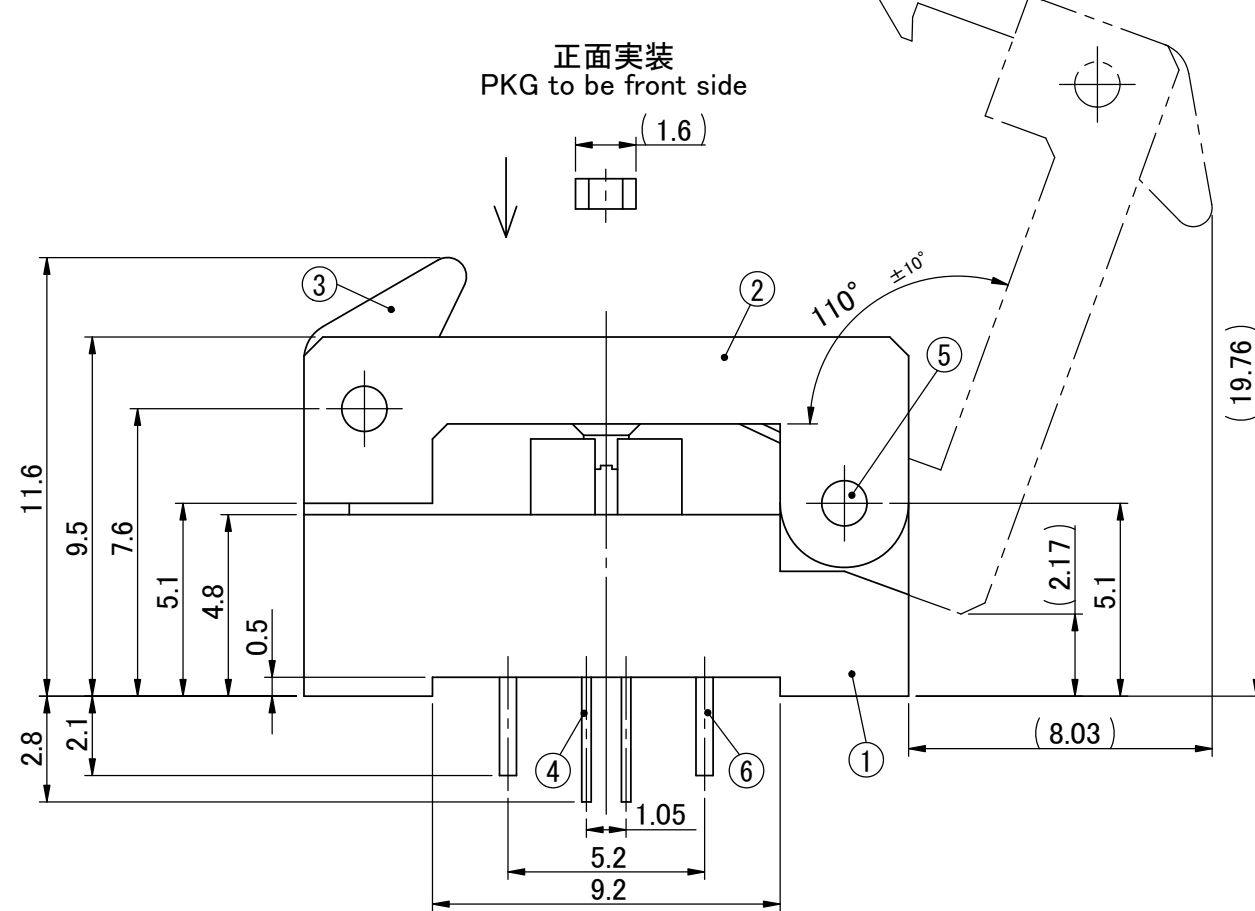
記号	年-月-日	変更理由	担当者	変更ヶ所
1	180117	PART NUMBER CHANGE	M. I	2
2	180130	CORRECTION	M. I	2
3				
4				
5				



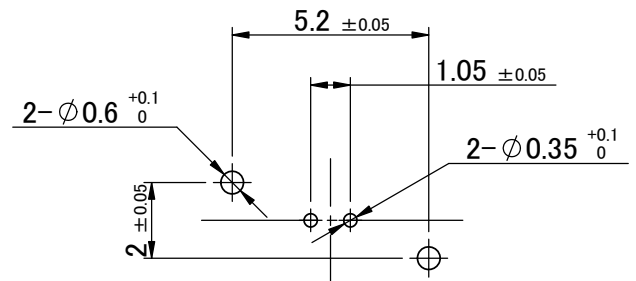
正面実装  
PKG to be front side



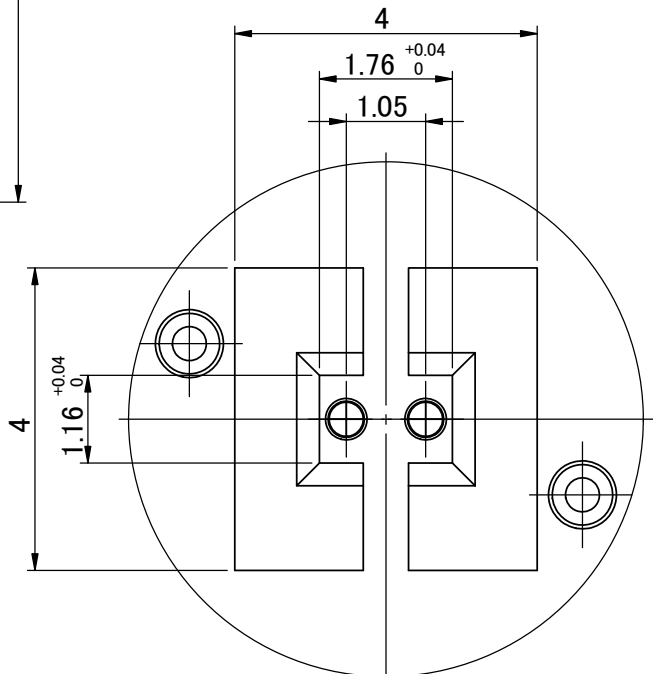
適合デバイス寸法  
PACKAGE SIZE



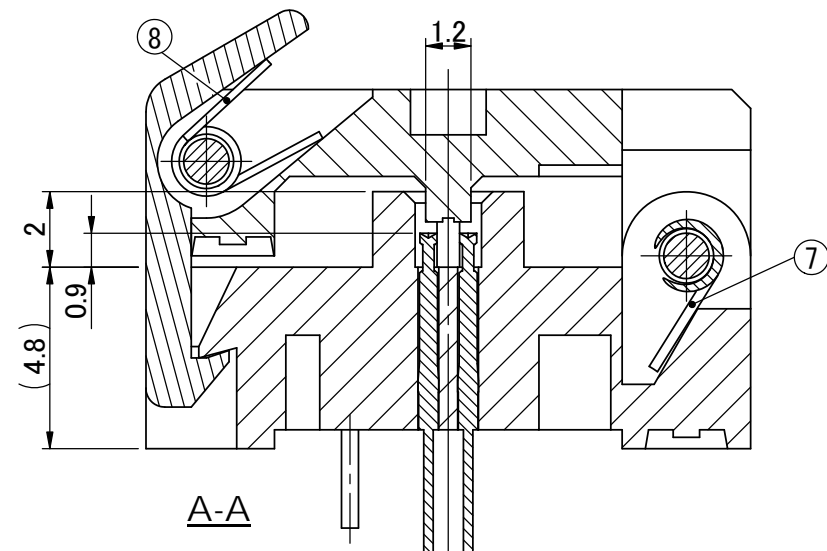
正面実装  
PKG to be front side



基板取付穴位置 (TOP VIEW)  
BOARD LAYOUT



詳細図 C: PKG挿入部  
DETAIL VIEW C (S=10:1)  
PACKAGE GUIDE DIMENSION



A-A

NOTE  
1. コンタクト荷重 (CONTACT FORCE)  
変位量0.5mm時、55gf ± 10gf (STROKE 0.5mm 0.54 N ± 0.1N)

ITEM	PART DESCRIPTION	PART NUMBER	QTY.	DRAWING NUMBER	NOTE
8	SPRING	CXP-E04-01-062	1	CB41100201	SUS
7	SPRING	CXP-E04-01-061	1	CB41100101	SUS
6	SHAFT	CXP-K02-05-051	2	MT31105801	phosphor bronze
5	SHAFT	CXP-E04-01-051	2	MT31100101	SUS
4	SPRING PROBE (Au plating)	PRC-055-02-00S	2	CT21202801	Brass
3	LATCH	CXX-K06-01-031	1	ML11116001	PES
2	COVER	CAP-002-01-021	1	ML11272801	PES
1	BASE	CXP-M02-03-011	1	ML11251201	PES

ITEM		PART DESCRIPTION	PART NUMBER	QTY.	DRAWING NUMBER	NOTE
ANGLE			エム・アイ・エス テクノロジー (株)			
一般公差 (GENERAL TOLERANCES)		±0.5	品名 (TITLE) 1.6 × 0.8 SOCKET (2PIN)			
170816	170816			品番 (PART NUMBER)	REV.	SCALE
M.I	M.I				c	5:1
製図		設計	検図	承認	図番 (DRAWING NUMBER)	SHEET
					AY000119901	1 / 1